

MARKETS SERVED

ADAPTIVE REUSE

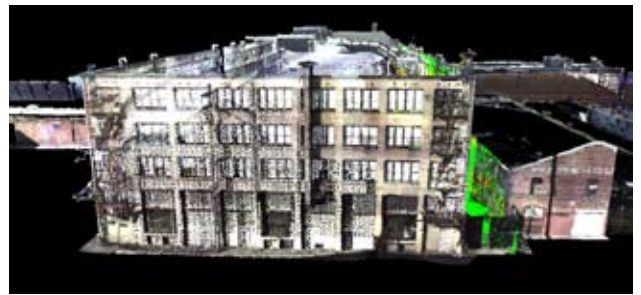
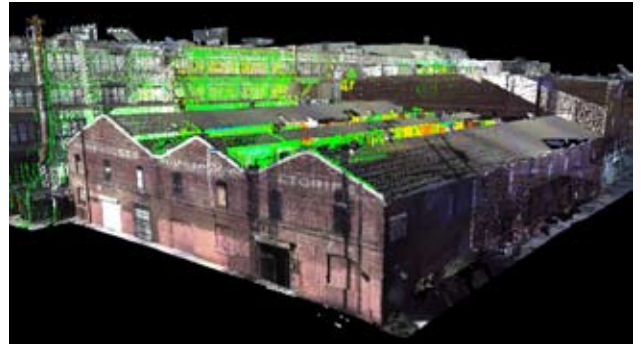
LA Urban Development

Areas of industrial warehousing are being transformed by developers hungry for land in downtown Los Angeles. These great buildings, originally developed for the manufacturing industry, and are being revitalized as live/work loft apartments and condominiums, currently in great demand in Los Angeles' spiraling downtown renaissance.

Mollenhauer's 3D surveying group collects the architectural data to make this happen. Using high-definition laser scanners, precise as-builts of entire city blocks can be generated in a matter of days in support of design and construction efforts.

In addition, the comprehensive "point cloud" data serves as the foundation for 3D models and accurate virtual scenarios for the planners and marketers.

Thanks to Nakada for permission to show their cutting edge Hewitt Mollino development at 3rd Street LA – in the Arts district.



The Roosevelt Building

The beautiful and historic Curlett and Beelman Roosevelt Building (circa 1923) is being revitalized by developers into loft apartments as part of downtown Los Angeles' residential renaissance.

Cutting edge high-definition laser scan technology enables precise as-builts of the entire building in just a matter of days. In addition, the raw point cloud data makes possible exciting 3D models and accurate virtual scenarios for the planners and marketers.

Thanks to Milbank for permission to show their cutting edge Roosevelt development in the Financial district LA.



MARKETS SERVED

ADAPTIVE REUSE

Herald Examiner Building

In support of an exciting rehabilitation of a landmark building, Mollenhauer carried out a controlled laser scan survey and provided complete architectural as-builts of Julia Morgan's Herald Examiner building, the headquarters of the Hearst publishing empire in Los Angeles.

The survey resulted in a reliable and extremely accurate foundation for the construction, design and management team to be able to analyze this complicated structure and develop the designs. It has also enabled a valuable historic architectural record of a unique LA landmark, complying with requirements of local and national standards.

